

ROBERTSON PHILLIPS
Estate Agents, Valuers,
Lettings and Property Management

262a Uxbridge Road, Hatch End,
Pinner, Middlesex HA5 4HS
Tel: 020 8428 7161

Email: pinner@robertsonphillips.co.uk

Harrow: 020 8863 1122
Lettings: 020 8421 4847


**ROBERTSON
PHILLIPS**
Estate Agents



Bellfield Avenue, Harrow Weald

Offers in the Region
Of £1.795.000



www.robertsonphillips.co.uk



A superb Five Bedroom Detached family home situated within this very sought after private road, offering features every discerning buyer would look for. Extended and refurbished to a very high standard throughout, with huge contemporary open plan kitchen/dining room and heated swimming pool, all in the perfect location for local shopping, schools and transport. Comprising cloakroom, sitting room, family/TV area, study and utility. There is a splendid master bedroom with en suite shower room, two further en suites and family bathroom. To help you relax, the gardens lead to secluded enclosed pool, gym and sauna complex. The property also features a carriage drive with parking for several cars.



Entrance Hall

Bespoke front door leading to tiled entrance hall with under floor heating and cupboards with double doors to lounge.

Cloakroom

Wash hand basin and wc.

Lounge 7.03m (23'1") max x 4.50m (14'9")

Double glazed bay window to front.

Family/office Area 8.03m (26'4") x 5.02m (16'6")

Open plan area with window to front and sitting area, opening to;

Kitchen/Dining Room 7.31m (24') x 6.27m (20'7") max

Superb contemporary style fitted kitchen with Corian "Moon design" workstation and worktops, Siemens integrated hob, extractor, wok burner, double oven, plate warmer and microwave.

Windows and double doors to garden, door to:

Study 5.06m (16'7") x 2.71m (8'9")

Window and double doors to garden



Boiler Room

Vaillant boiler and mega flow hot water cylinder. storage cupboard door to:

Utility 3.47m (11'5") x 2.41m (7'11")

Sink unit, plumbed for washing machine and dryer.

Landing Window to front.

Bedroom One 5.13m (16'10") x 4.47m (14'8")

Elegant room with window to rear and range of fitted wardrobes, door to:

En-suite Shower Room

Luxury en suite with tiled shower enclosure, twin vanity wash hand basins, low-level WC, fully tiled walls and designer heated towel rail.

Bedroom Two 4.47m (14'8") x 4.15m (13'7")

Double glazed window to front and fitted wardrobes.

Bedroom Three 4.47m (14'8") max x 3.39m (11'2")

Window to side and fitted wardrobes.

Bedroom Four 4.72m (15'6") x 2.79m (9'2") max

Double glazed window to front and door to:

En-suite Shower Room

Window to rear. Tiled shower enclosure, vanity wash hand basin and wc.

Bathroom

Jacuzzi bath, tiled shower enclosure, vanity wash hand basin, fully tiled walls and heated towel rail.

Landing

Fitted storage cupboard and door to:

Bedroom Five 5.12m (16'10") x 3.15m (10'4")

Twin windows to rear and fitted wardrobes, door to:

En suite Bathroom

With roll top bath, vanity wash hand basin, half ceramic tiled walls, low-level WC and heated towel rail.

Parking

Gated carriage drive with ample space for several cars.

Attractive gardens with patio area, lawn leading to Pool Complex...

Plenty of space to relax with the family and friends.

Generous heated pool with doors opening to secluded garden area. Sauna, kitchen area, spacious sitting area. Large storage room and pump room.

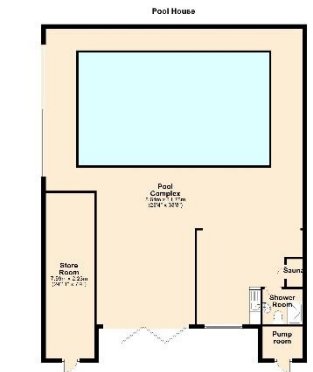
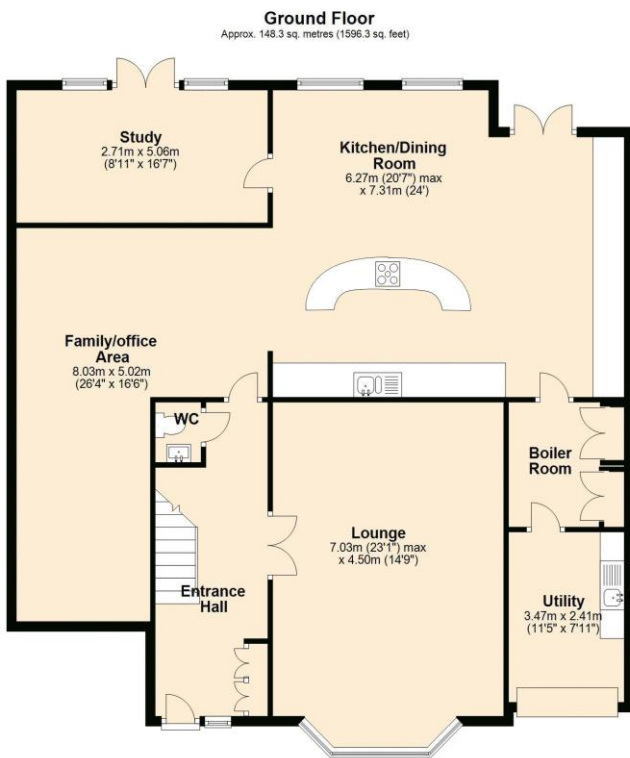
Council Tax Band: G

Tenure: Freehold

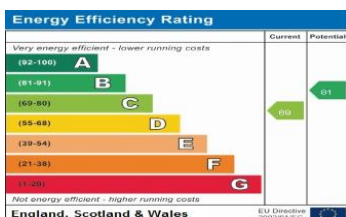


KEY FEATURES:

Five Bedrooms • Three Reception Rooms • Superb Kitchen/dining Room • Four Bthrooms • Pool Complex • Secluded Gardens • Carriage Driveway • No Upper Chain



Total area: approx. 277.8 sq. metres (2990.4 sq. feet)



DISCLAIMER: Robertson Phillips may not have sought to verify the legal title of the property, the existence of planning permissions and/or building regulation approvals and have been unable to check the working condition of any services or appliances.

Property layouts are for general guidance and are not drawn exactly to scale. Measurements are taken at the widest points and bays, alcoves, wardrobes etc. may not be shown.